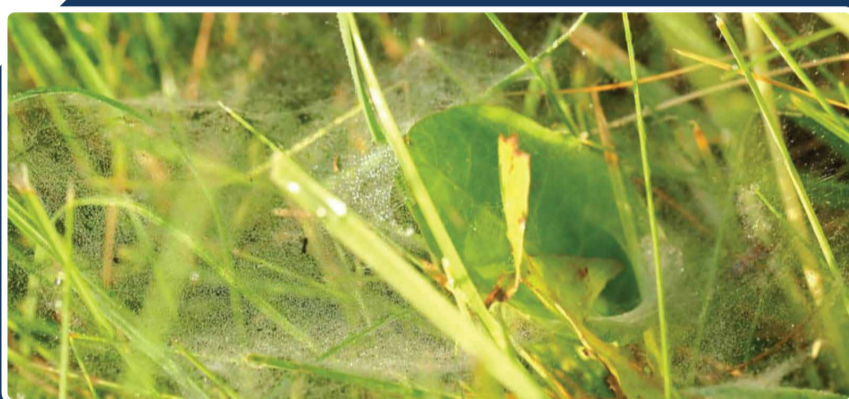


Sod Webworm Control



The sod webworm is a lawn caterpillar that invades lawns between the months of May–July and will reappear in the fall. In the adult form, the webworm is a small beige moth, sometimes called a lawn moth or crambus, that has a 1-inch wingspan.

Sod webworms produce silk-lined tunnels in the thatch and soil



Sod Webworms as **Adults**

In the adult form, the webworm is a small beige moth, sometimes called a lawn moth or crambus, that has a 1-inch wingspan. The adult female moths fly at dusk, dropping as many as 200 eggs on the grass blade surfaces and thatch area of your lawn.



Signs of **Damage**

The caterpillars “skeletonize” grass blades so that only the veining structure remains. They do this by eating the green out of the blade and leaving in transparent looking.

Sod Webworm **Treatment**

Best Controlled with Active Ingredients Chlorantraniliprole, Bifenthrin or Triclorfon.

